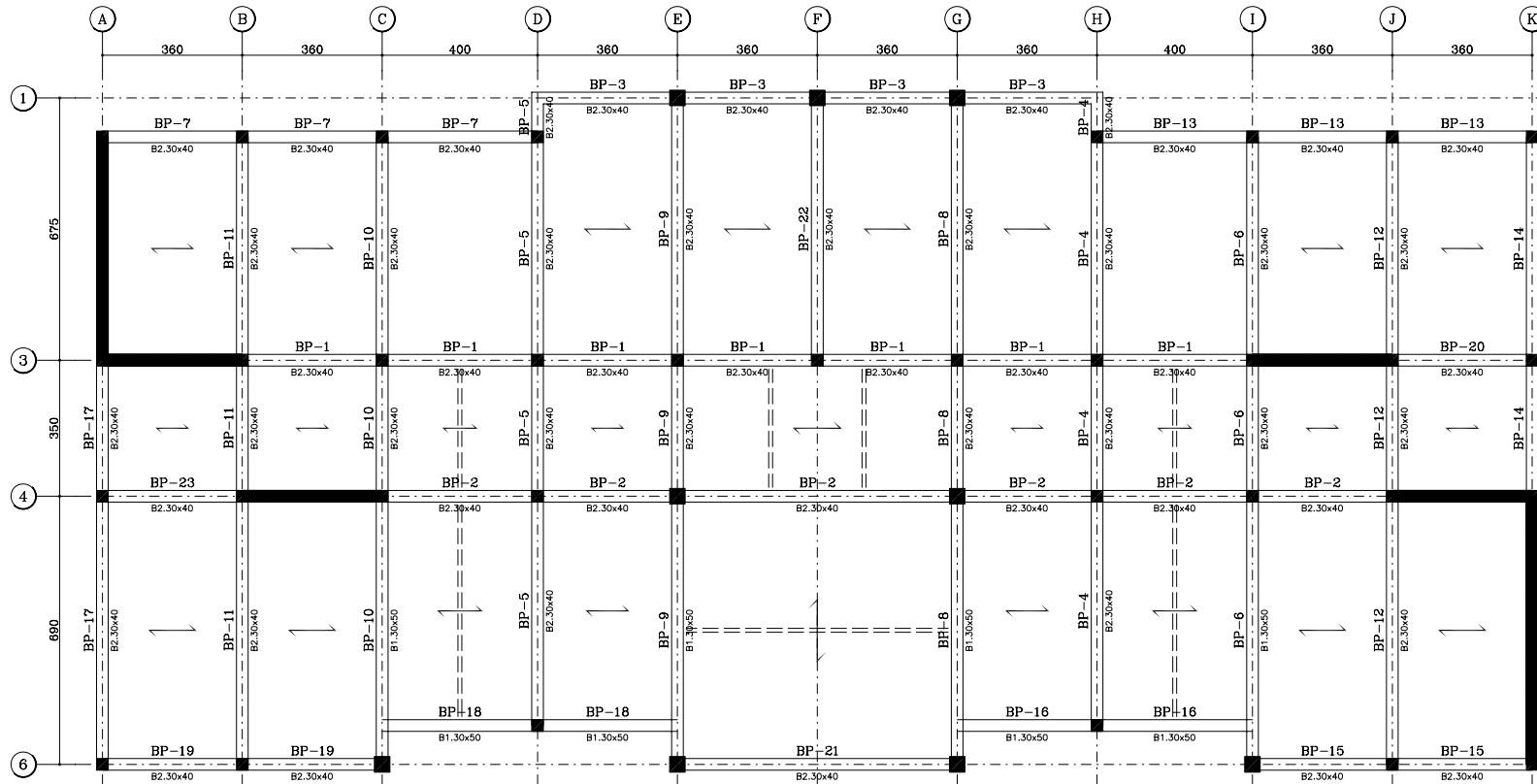
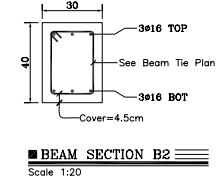
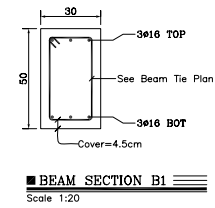
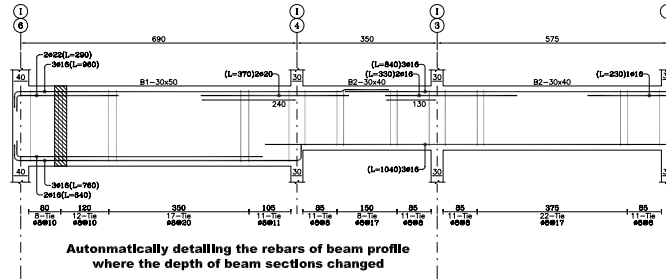
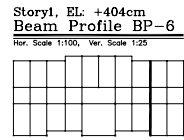


ETABS MATE - Special Cases

Detailing of Beams with Various Depth in Beam Profile Drawings



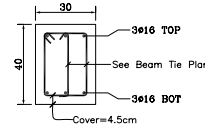
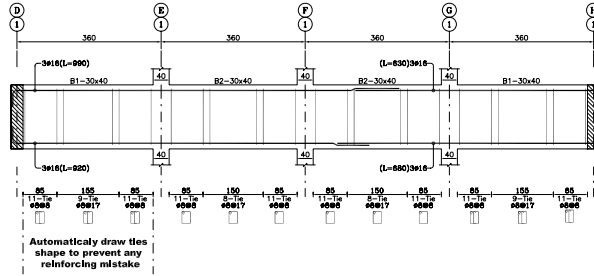
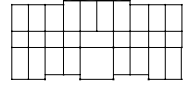
BEAM PROFILE DETAILS PLAN

Elevation: +404 cm

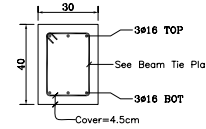
ETABS MATE - Special Cases

Detailing of Beams with Various Ties Type in Beam Profile Drawings

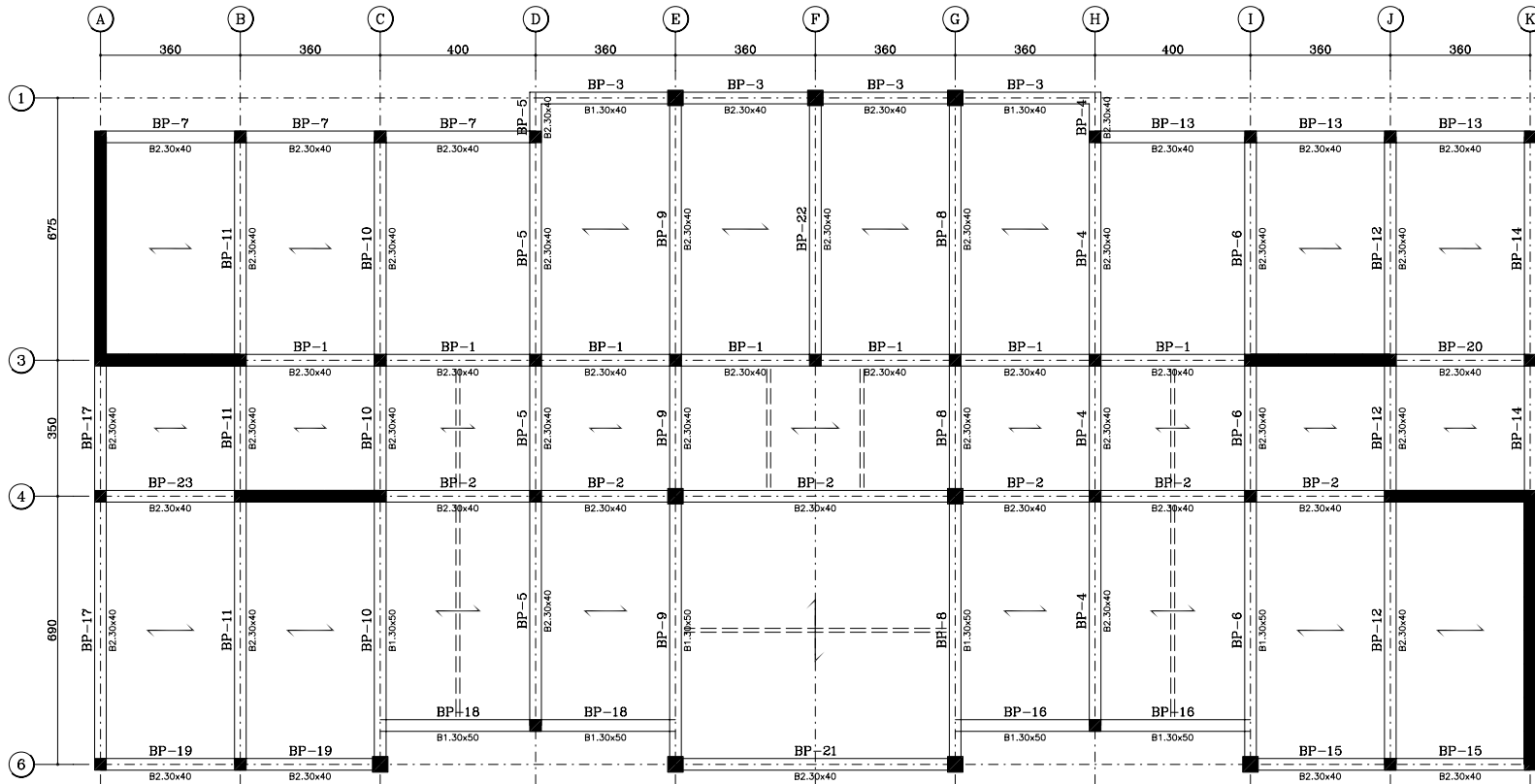
Story1, EL: +404cm
 Beam Profile BP-3
 Hor. Scale 1:100, Ver. Scale 1:25



■ BEAM SECTION B1
 Scale 1:20



■ BEAM SECTION B2
 Scale 1:20

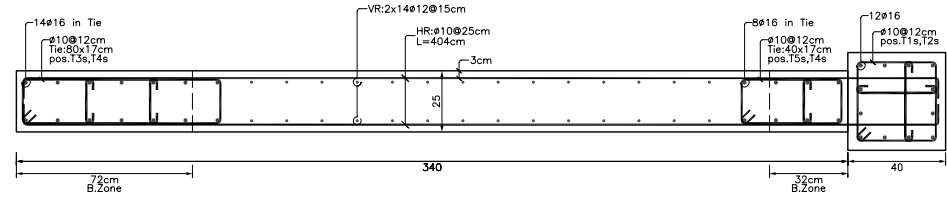
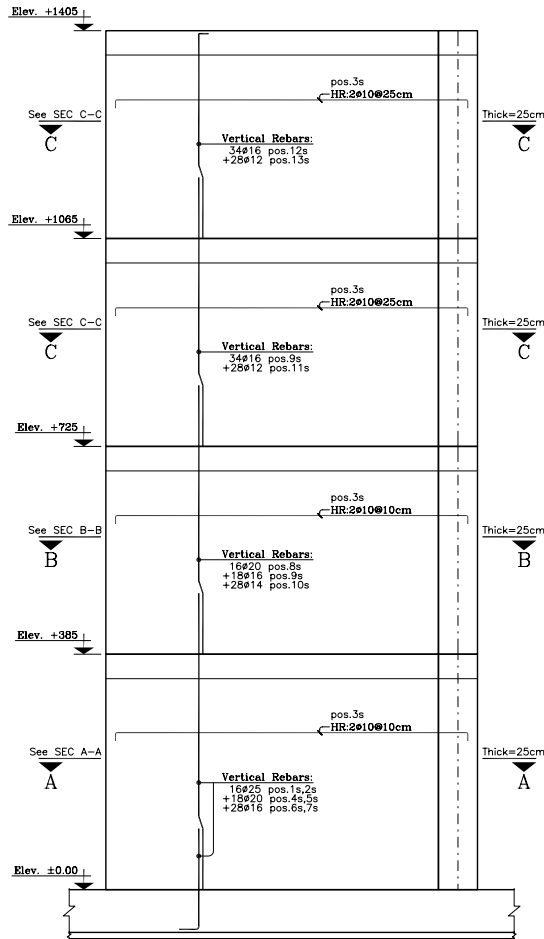


■ BEAM PROFILE DETAILS PLAN

Elevation: +404 cm

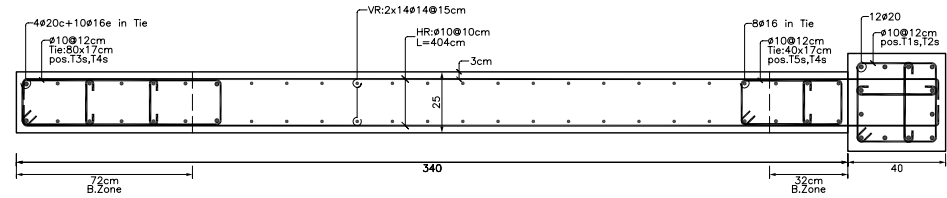
ETABS MATE - Special Cases

Detailing of Shear walls with Complicated Reinforcement



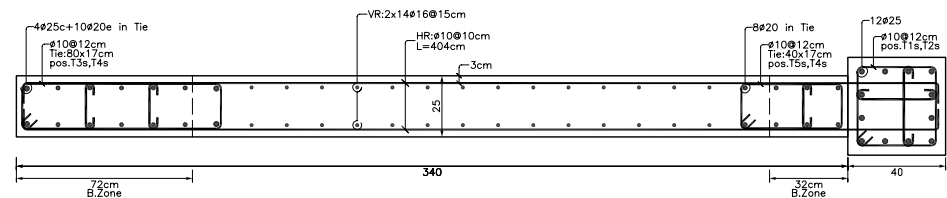
■ SHEAR WALL 1 : SECTION C-C

Use double hook tiepin #10@80cm as mesh spacer in length of wall.
 VR: Vertical Reinforcement, HR: Horizontal Reinforcement
 B.Zone: Boundary Zone



■ SHEAR WALL 1 : SECTION B-B

Use double hook tiepin #10@80cm as mesh spacer in length of wall.
 VR: Vertical Reinforcement, HR: Horizontal Reinforcement
 B.Zone: Boundary Zone



■ SHEAR WALL 1 : SECTION A-A

Use double hook tiepin #10@80cm as mesh spacer in length of wall.
 VR: Vertical Reinforcement, HR: Horizontal Reinforcement
 B.Zone: Boundary Zone

■ DETAILS OF SHEAR WALL 1

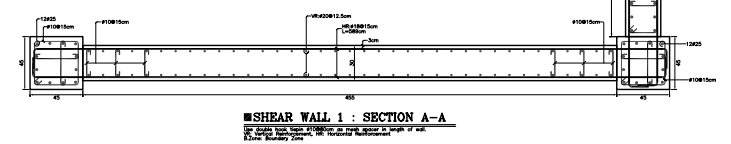
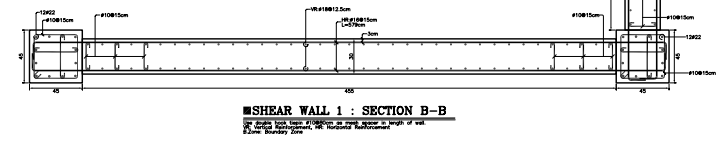
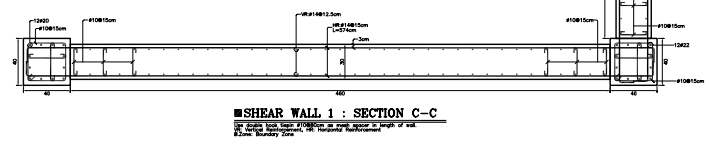
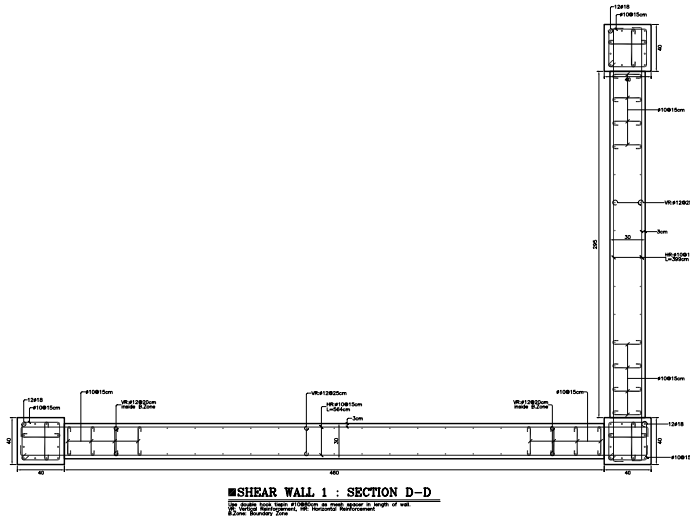
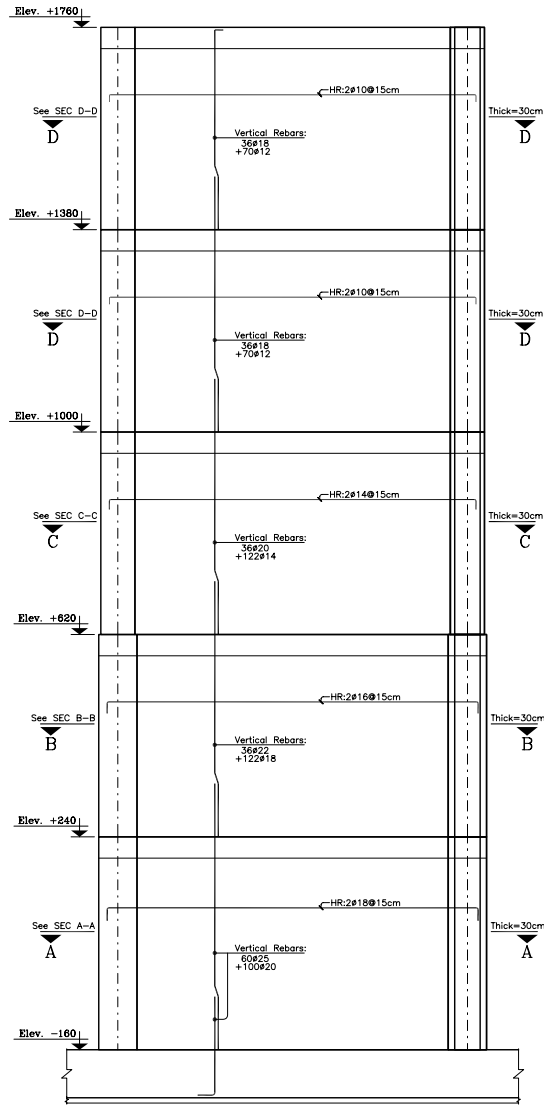
ELEVATION VIEW

ETABS MATE - Main Rebar Listofer of Shear Walls						
Position Number	Rebar Shape (schematic)	Dia. (mm)	Length (cm)	Weight (kg)	Number (pcs)	Weight Total (kg)
1a	545	#25	545	21	16	336
2a	225	#25	225	9.8	16	157.2
3a	404	#10	404	2.5	200	498.2
4a	485	#20	485	12	18	215.3
5a	190	#20	190	4.7	18	84.3
6a	465	#16	465	7.3	28	205.5
7a	165	#16	165	2.6	28	72.9
8a	440	#20	440	10.9	16	173.6
9a	420	#16	420	6.6	52	344.7
10a	410	#14	410	5	28	138.7
11a	400	#12	400	3.6	28	99.4
12a	357	#16	357	5.6	34	191.6
13a	357	#12	352	3.1	28	87.5
Shear Wall Main Rebar Summation Values					510	2605 kg

ETABS MATE - Tie and Tiepin Listofer of Shear Walls						
Position Number	Tie Shape (schematic)	Dia. (mm)	Length 0	Weight (kg)	Number (pcs)	Weight Total (kg)
T1a	146	#10	146	0.9	117	105.3
T2a	63	#10	63	0.4	234	90.9
T3a	212	#10	212	1.3	117	152.9
T4a	48	#10	48	0.3	351	103.9
T5a	132	#10	132	0.8	117	95.2
Shear Wall Tie and Tiepin Summation Values					936	548 kg

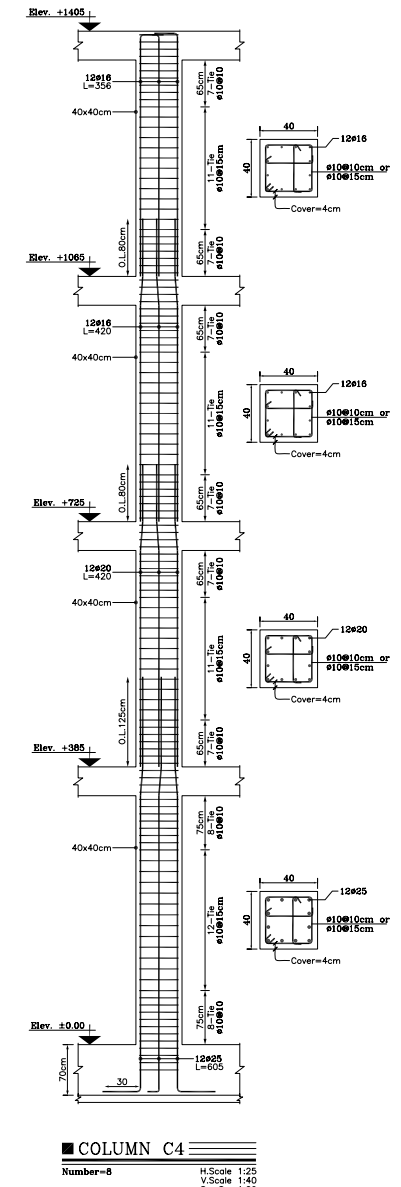
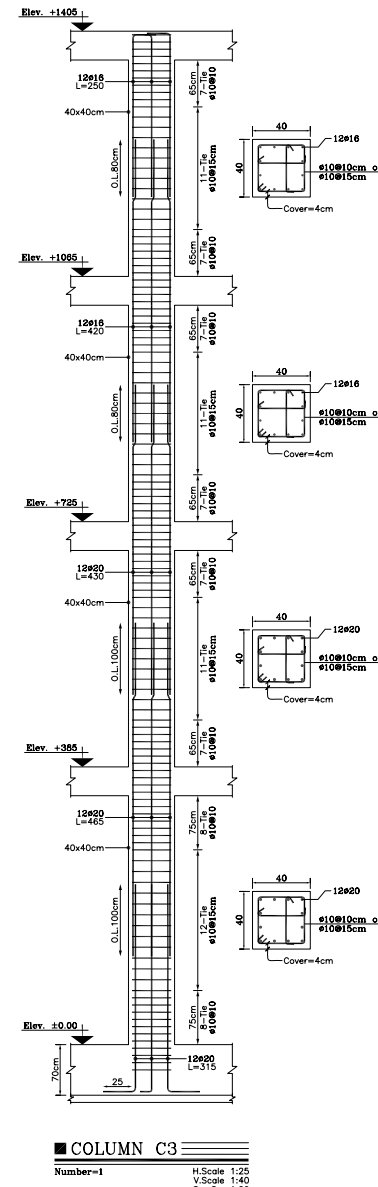
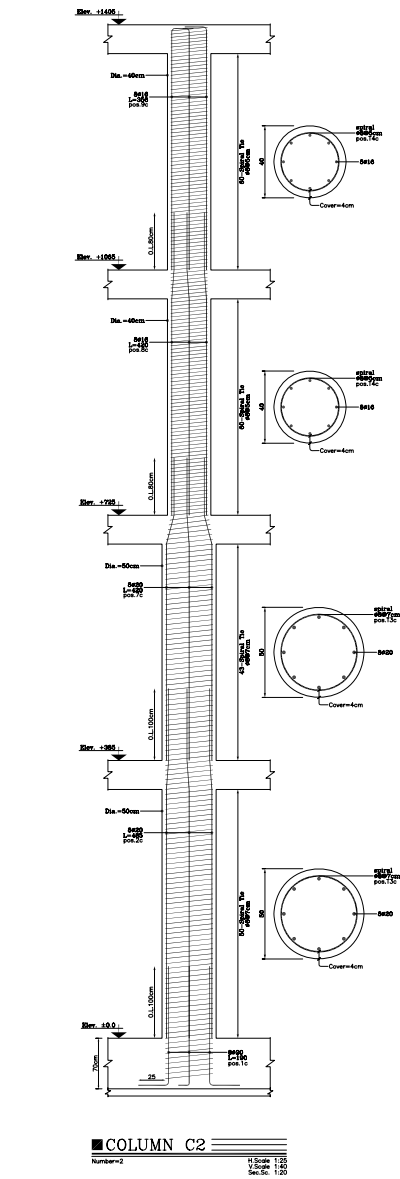
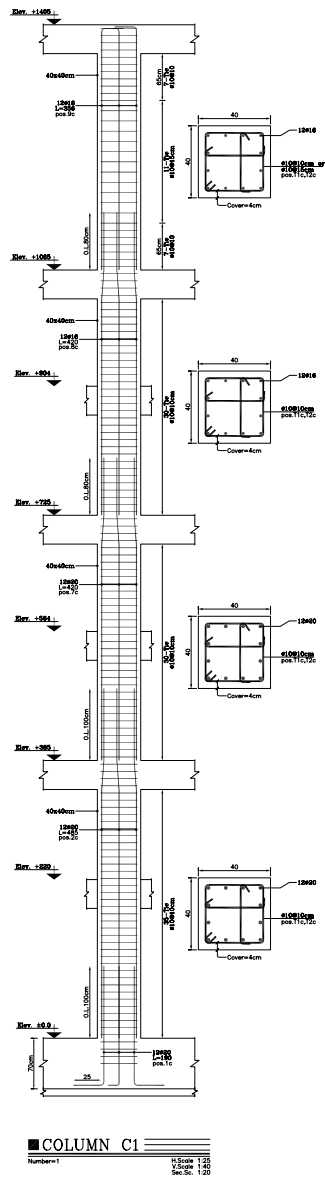
ETABS MATE - Shear Wall Rebars Summary Report				
Rebar Size	Diameter (mm)	Length (m)	12m Bar Number	Weight (kg)
#10	10	1697.2	141	1048
#12	12	210.6	18	187
#14	14	114.8	10	139
#16	16	516.2	43	615
#20	20	191.9	16	473
#25	25	128	11	493
Shear Wall Rebar Total Weight =				3153 kg (3.153 ton)

Rebars Overlap Length Table (cm)										
According to Rebar Position, Rebar Size and Properties of (F'c=210 Kg/cm ² , Fy=4000 Kg/cm ²)										
Rebar Size	#10	#12	#14	#16	#18	#20	#22	#25	#28	#32
Beam Top	70	80	95	110	120	135	185	210	240	270
Beam Bottom	50	60	70	80	90	100	145	165	185	210
Column-Wall	50	60	70	80	90	100	145	160	180	205



DETAILS OF SHEAR WALL 1
ELEVATION VIEW

SHEAR WALL 1 : SECTION A-A



Intermediate Beam

Circular Section

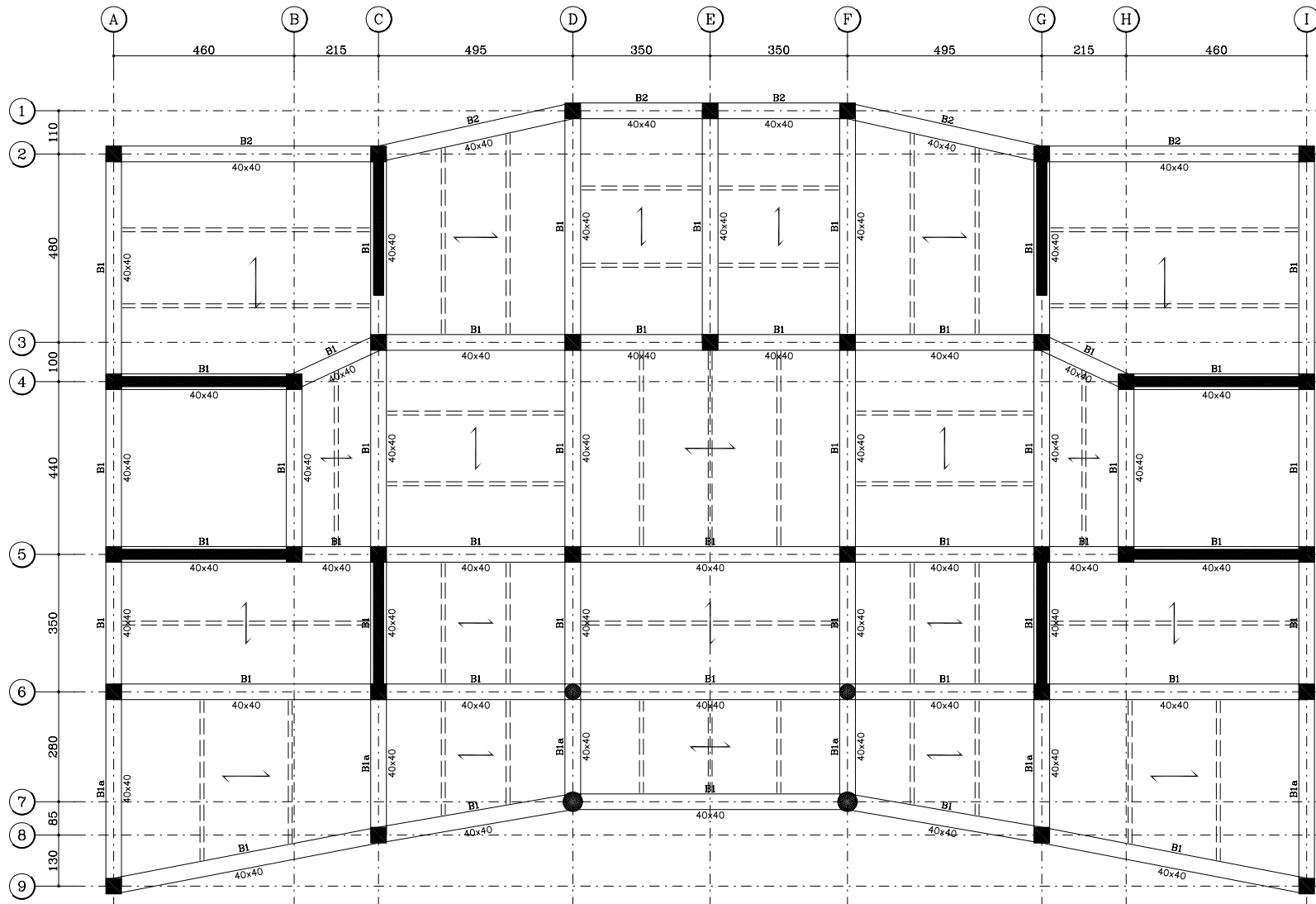
Splice in Middle

No Splice in 1st Story

ETABS MATE

PLAN LEVEL: STORY1 Elevation: +385 cm

DESCRIPTION: BEAM TYPE AND BEAM SECTION PLAN



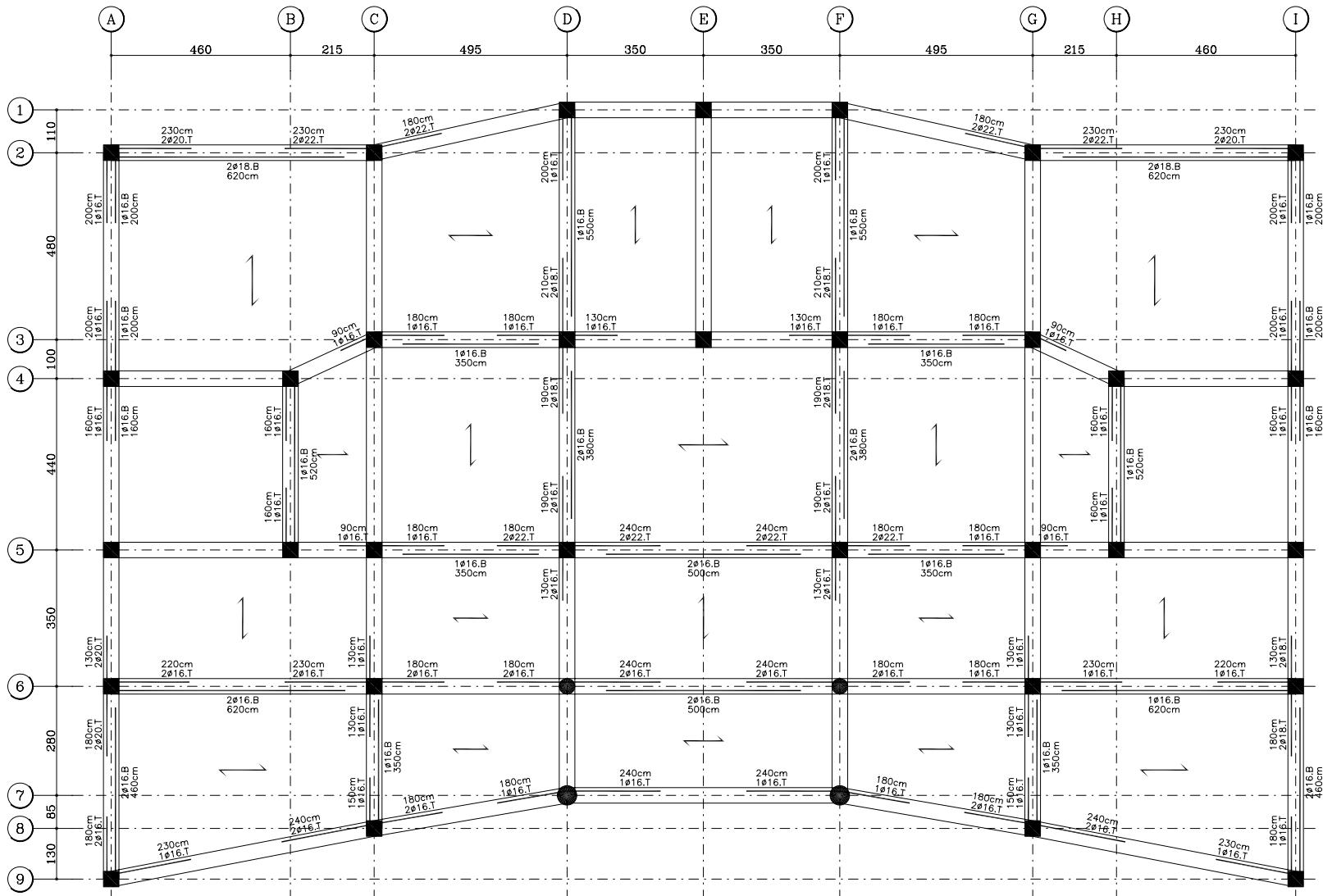
■ BEAM TYPE AND BEAM SECTION PLAN

STORY1 Elevation: +385 cm

ETABS MATE

PLAN LEVEL: STORY1 Elevation: +385 cm

DESCRIPTION: BEAM ADDITIONAL REINFORCEMENT PLAN



BEAM ADDITIONAL REINFORCEMENT PLAN

STORY1 Elevation: +385 cm

